

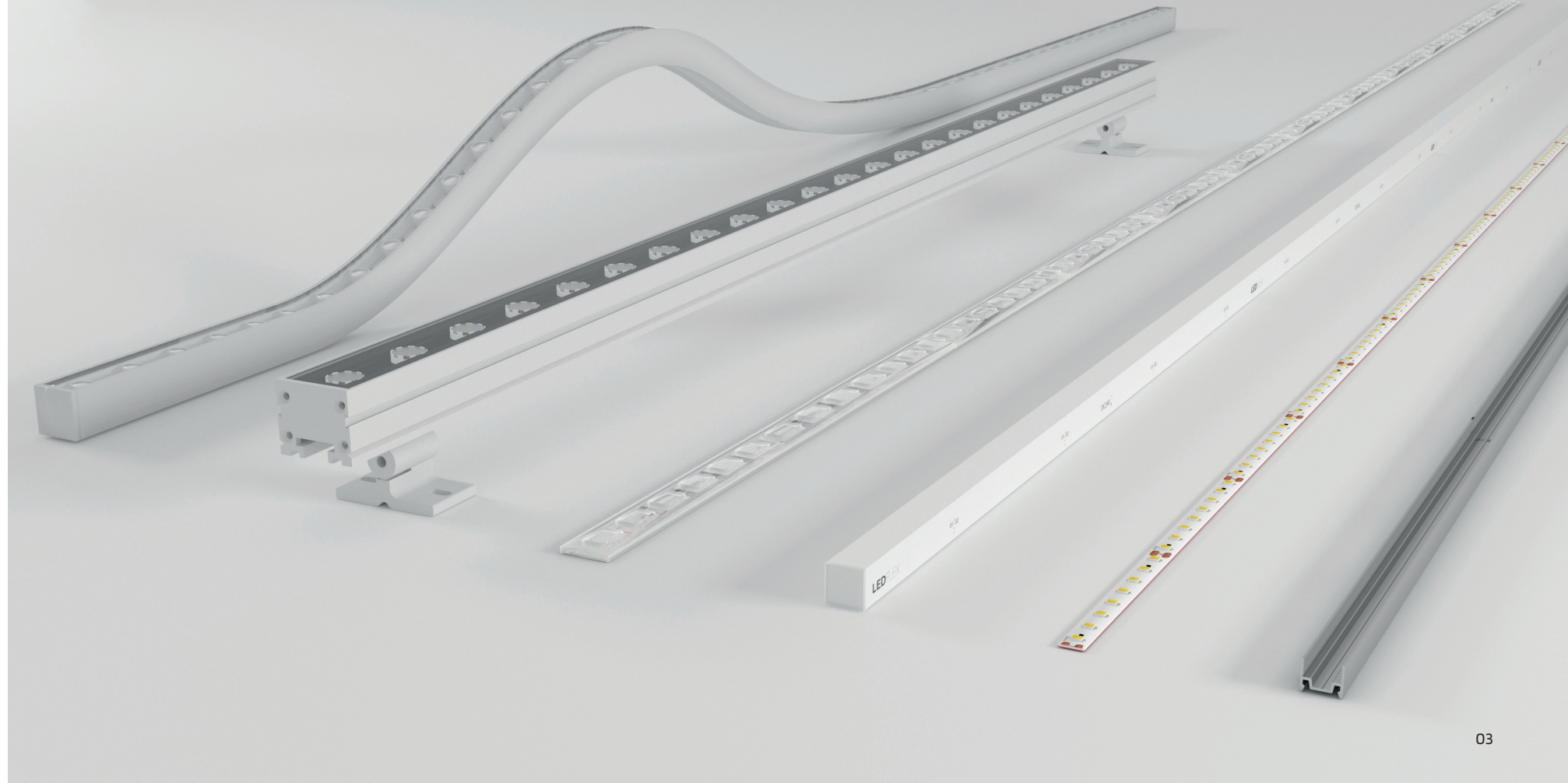
LEDFLEX

PREMIUM LINEAR
LIGHTING SOLUTIONS

Founded in 2010 by a team who are passionate about lighting and technology, LEDFlex works together with designers and architects to bring surreal yet functional lighting concepts to life. We work on a project to project basis, crafting premium linear LED lighting solutions tailored to individual project requirements.

In addition to offering a comprehensive range of rigid and flexible linear, panel and mounting solutions, our highly qualified in-house technical team can provide guidance on design, installation and system construction. We are further able to support lighting projects across the globe directly with our extensive sales network consisting of international offices as well as distributors.

From architectural and urban to residential and commercial, LEDFlex is the ideal solution to any application. While our aim is to make our products the most efficient and reliable on the market, we constantly strive to indulge our clients with creativity and inspiration.



WESTIN MINA SEYAH

PRODUCTS SPECIFIED

Eco Flex 112
Eco Flex 120
Flexi Grazer Narrow 20°

LIGHTING DESIGNER

Smith Tait

LOCATION

Dubai, UAE

THE PALATIAL RENOVATION LEADING TO A WORLD OF PURE EXTRAVAGANCE

Upon arrival, guests are met with an opulent indoor gazebo structure which hosts the main reception area. Eco Flex in 3000K enclosed in a black profile has been surface mounted along the frame as well as the cove of the gazebo which emits a soft, ethereal glow around the edges, creating an inviting yet intimate ambience for guests. The luminaire is further integrated as an indirect light source beneath the raised seating platform adding an extra layer of illumination

CASE STUDY 01

and amplifying the depth of the seating arrangement. Across the gazebo stands a majestic bar area which highlights the reception's symmetry.

The bar joinery has been integrated with Lumen Line in 3000K to add an element of drama to the space. Leading from the main reception area is the foyer, primarily illuminated with the high power Lumen Line range which is fitted into the cove. In addition, Flexi Grazer Narrow in 20° beam angle has further been used in the foyer for coffer lighting, subtly framing edges of the room and devising a powerful visual effect that adds to the impressive interiors housed within this neoclassical architecture.



THE LONDONER

PRODUCTS SPECIFIED

Ultra Bright 96 RGBW
Eco Flex 60
Eco Flex 182

LIGHTING DESIGNER

Inverse Lighting

LOCATION

London

A SOPHISTICATED BOUTIQUE HOTEL NESTLED IN LONDON'S LEICESTER SQUARE

On arrival, guests are immediately welcomed by a large open space with the reception area discreetly to the side to allow free passage to the lounge. The lighting is kept intimate with subtly integrated Eco Flex in 2700K. The luminaire is further used to illuminate the hotel's grand staircase, providing a beautiful glow befitting of the sophisticated staircase,

as well as in The Stage restaurant and bar integrated seamlessly into the joinery of the bar counter providing functional lighting.

In the wellness Retreat, the pool area ceiling is lit with LEDFlex's colour changing Ultra Bright RGBW in order to set the appropriate mood depending on the time of day.

CASE
STUDY
02





TOTTENHAM HOTSPUR

PRODUCTS SPECIFIED
Ultimo Neon 16 RGB TV

LIGHTING DESIGNER
Zumtobel

LOCATION
London

SETTING A NEW BENCHMARK FOR STADIUMS ACROSS THE GLOBE

The revolutionary Tottenham Hotspur Stadium offers one of the finest experiences for spectators with its immersive technology and world-class facilities. From concerts to the National Football League, the stadium's state-of-the-art, fully retractable pitch is designed to host diverse events. To top it all, the stadium now features interactive

attractions for visitors around the clock, with the latest one being The Dare Skywalk. The adrenaline-pumped experience challenges adventure-seekers to 'take it to the edge' by stepping out onto a glass walkway 47 metres above the football pitch and embark on a journey to the stadium's iconic golden cockerel, all with spectacular views of the city.

In cooperation with Zumtobel, LEDFlex has crafted bespoke lengths of Ultimo Neon RGBW 16x16 in 3000K, which can be seen emerging at the entrance, spiralling to the roof of the stadium and lining the edge of the walkway circuit. The Neon is encapsulated in high-grade silicone, enhancing the luminaire's durability in extreme weather conditions.

IVY ASIA MAYFAIR

PRODUCTS SPECIFIED

Lumen Line 176
Ultimo Neon 16 SV
Nano Flex HE 182

LIGHTING DESIGNER

18FIFTY

LOCATION

London

THE HOME TO DELICIOUS ASIAN-INSPIRED CUISINE SET WITHIN A UNIQUE AND VIBRANT DÉCOR

Lighting plays an integral part in enhancing this Asian-inspired interior as well as creating a lustrous yet cosy ambience for diners while highlighting focal designs details, architecture and artwork for an experience that stuns the senses. To set the ambient lighting, coffers in the ceiling

throughout the restaurant use Lumen Line in 2300K from LEDFlex's flagship Flexi Range. To create the golden illumination of the upper wall detail, corridors, and staircases, the 4mm wide Nano Flex HE in 2400K has further been integrated. The luminaire is additionally used to create a

warm ambience within the seating booths. Decadent focal areas of the restaurant such as the bar front, sushi bar, and private dining areas have been downlit using High Lumen Ultimo Neon Silicone in 2200K.

CASE
STUDY
04



DELTA

PRODUCTS SPECIFIED

Ultimo Neon Silicone Pixel

LIGHTING DESIGNER

Void

LOCATION

Oslo, Norway

AN UNCONVENTIONAL INSTALLATION OF WATER IN THE FORM OF LIGHT

Much like a river flows, meanders and pulses, the lighting design for Delta replicates this, moving and flowing with the city's rhythm, welcoming people to be part of the space. LEDFlex worked with Void to supply lighting solutions for this inspiring project, using products from the extensive LEDFlex range including the 16mm wide Ultimo Neon Silicone Pixel

Short Pitch RGB in horizontal and vertical bend. A white warm hue glows through the quarter most evenings however the lighting is dynamic and therefore has the ability to change to RGB for special events and occasions. The technology behind the lighting was a key part of the design. The lighting is equipped with motion sensor technology to detect the movement of

visitors throughout the quarter. The river-like spectacle pulses when no one is walking through and then as people walk through the space, it comes to life, tracking the movement, flowing with them, and lighting the way as they stroll through the streets.

CASE
STUDY
05





ISTANBUL AIRPORT

PRODUCTS SPECIFIED

Ultimo Neon Pixel 16 RGB TV

LIGHTING DESIGNER

Cinimod Studio

LOCATION

Turkey

A MILESTONE FOR THE GLOBAL AVIATION INDUSTRY, ISTANBUL OPENS DOORS TO ONE OF THE WORLD'S LARGEST AIRPORTS

In a creative collaboration with London-based experiential design studio, Cinimod, LEDFlex has designed bespoke Pixel solutions for the Airport's Turkish Airlines lounges. Split into five lounges, across a grand area of 15000 sqm within the new futuristic airline's hub, LEDFlex has manufactured over 10km of Ultimo Neon 16x16 Pixel RGBW to be integrated

into the innovative and iconic 'Ribbon Wall' which consists of six lines of dynamic light guiding the passenger journey through the lounges.

The Pixel Solutions are controlled by DiGidot drivers which enable intelligent communication that programmes the light into contemporary, changing wave-like

movements. Technical experts at LEDFlex provided detailed electrical schematics for on-site engineers that facilitated the installation process, ensuring that the luminaire system adapted to match the designer's requirements.

GRAND HYATT KUWAIT

PRODUCTS SPECIFIED

Lumen Line 240
Eco Flex 120
Ultimo Neon 10 TV

LIGHTING DESIGNER

Elektra Lighting

LOCATION

Kuwait

GRAND HYATT MAKES A MAJESTIC DEBUT IN THE ICONIC BUSINESS AND LIFESTYLE DESTINATION, KUWAIT

The lavish hotel towers over an area of modern development, providing guests with an array of exclusive amenities during their stay for the epitome of luxury hospitality. Lighting consultants, Elektra Lighting specified bespoke lighting solutions from LEDFlex to create a soft and elegant ambience synonymous with luxury and relaxation.

Upon arrival guests are instantly captivated by the dramatic lobby with exceptional art that celebrates the region, surrounded by swathes of white drapery and a marble water feature at the centre. LEDFlex Lumen Line in 2700K provides flexible low-level lighting in troughs and coves to cast public areas with a decadent and dynamic backdrop. The Noor spa and indoor pool is an exclusive aquatic haven

where LEDFlex supplied Ultimo Neon 10 in 2700K luminaires to illuminate the wall and floor details of the water feature around the Spa adding a sense of tranquillity to the space. Shelving in the library is subtly backlit by the Eco Flex in 2700K, creating a sophisticated setting for offices and meeting rooms that further add to the majestic allure of this upscale Grand Hyatt collection.

CASE
STUDY
07



RIGID GRAZER

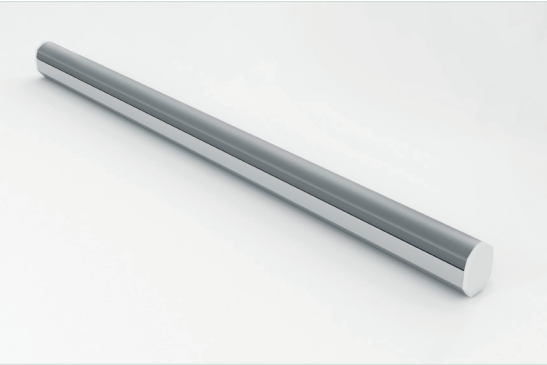
HIGH EFFICIENCY OPTICAL FIXTURES RE-IMAGINED FOR SEAMLESS WALL GRAZING

The new Rigid Grazer family is built upon the technology of the existing Flexi Grazer family, offering premium optical solutions to achieve homogeneous and diffused surface grazing. The family consists of Rigid Grazer Nano and Rigid Grazer Maxi, both of which offer distinctive features making them ideal for walls of various textures as well as a wide spectrum of architectural applications. While the Rigid Grazer Nano encompasses a high-powered flexible PCB housed

within a sleek profile and state-of-the-art lens with TIR and reflective optics, Rigid Grazer Maxi consists of optical rigid PCB that allow seamless runs of the fixtures in addition to assuring ease of installation. The Rigid Grazer solutions are further available in various beam angles, dimensions and colour temperatures that combine the best of linear optics technology.



RIGID GRAZER NANO



LIGHTING OPTIONS

Single Colour 2400K-6300K
RGBW

FEATURES

UGR<16
UL Listed
RAL Coating
ROHS Certified
CE Certified

CRI

90+

BEAM ANGLE

10°, 30°, 60°

UNIQUE CHARACTERISTICS

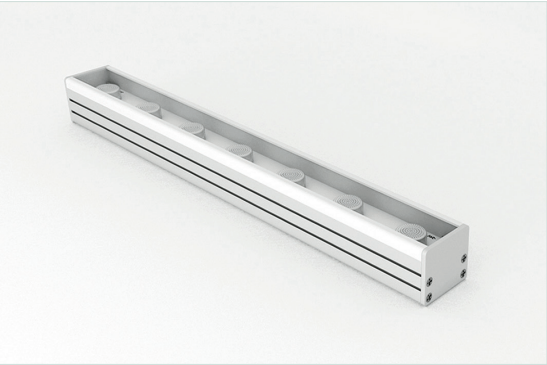
Zero Glare
Precise Peak Beam
Minimal and Sleek
Minimal Light Spill
TIR Lens

LIGHTING WITH PRECISION

Rigid Grazer Nano offers state of the art technology which combines the most compelling features of TIR and reflective optics, resulting in high end quality fixture. The lens design, with 10°, 30°, and 60° beam angles, produces a sharp and precise beam of light that significantly reduces light spill and increases the overall efficiency of the fixture, providing

glare-free visual comfort. Moreover, the luminaire allows for extremely discreet dimensionality as the light source is more easily hidden which helps to create focal points or accents on textured surfaces.

RIGID GRAZER MAXI



LIGHTING OPTIONS

Single Colour 2500K-6500K

FEATURES

UL Listed
RAL Coating
ROHS Certified
CE Certified
IK08

BEAM ANGLE

Narrow - 20°, 30°
Oval - 20° x 45°
Asymmetric - 110° x 70°

UNIQUE CHARACTERISTICS

Modular: Easy Assembly
Customisable Sizes

FOR ULTIMATE UNIFORMITY OVER LONG RUNS

Offered in single and dual beam angles of 20°, 30° and 20°x 45° and 110°x 70° with non-encapsulated rigid PCBs, the Rigid Grazer Maxi enables long, seamless runs resulting in a flawless grazing finish for any interior. The luminaire also features a wider pitch as a result of which it consumes less power, leading to higher efficiency for long term use.

The Rigid PCBs are set in square profiles which can be powdered coated in any colour, giving more flexibility to design concepts. The luminaries will also be available in an expansive range of colour temperatures from 2500K-6500K.

RIGID OPTICO

LIGHTING OPTIONS

Single Colour 2700K-6500K
RGB
RGBW
Pixel

FEATURES

ROHS Compliant
CE Certified
UV Resistant
RAL Coating
IP 66

BEAM ANGLES

Optico 36 10° x 60°, 15° x 60°, 30°x 60°
Optico 40 15° x 50°
Optico 54 15° x 30°, 30° x 50°
Optico pixel 120°

UNIQUE CHARACTERISTICS

High-Power
High Grade Aluminium
Toughened Glass Cover

HIGH-POWERED DYNAMIC OPTICAL FEATURES FOR EXTERIOR FACADE GRAZING AND WALL WASHING

Encompassing a wide range of beam angles, the fixtures are designed with high grade aluminium for better heat sink and come with a toughened glass cover, enabling it to withstand extreme temperatures and environments. The family is essentially categorised by its width: 36mm, 40mm

and 54mm, each offering different beam angles, colour temperatures and voltages. A pixel solution is further available. Each fixture is available in lengths of 500mm and 1000mm as well as in white, black and grey body colours.



FLEXI GRAZER 3D

LIGHTING OPTIONS

Single Colour 2400K-6000K
RGBW
Pixel

FEATURES

Flame Resistant
Saltwater Resistant
Solvent Resistant
UV Resistant
IP67

DIMENSIONS

23mm / 35mm

UNIQUE CHARACTERISTICS

Minimal light spill
Customisable sizes
Dual Bend ideal for curved surfaces

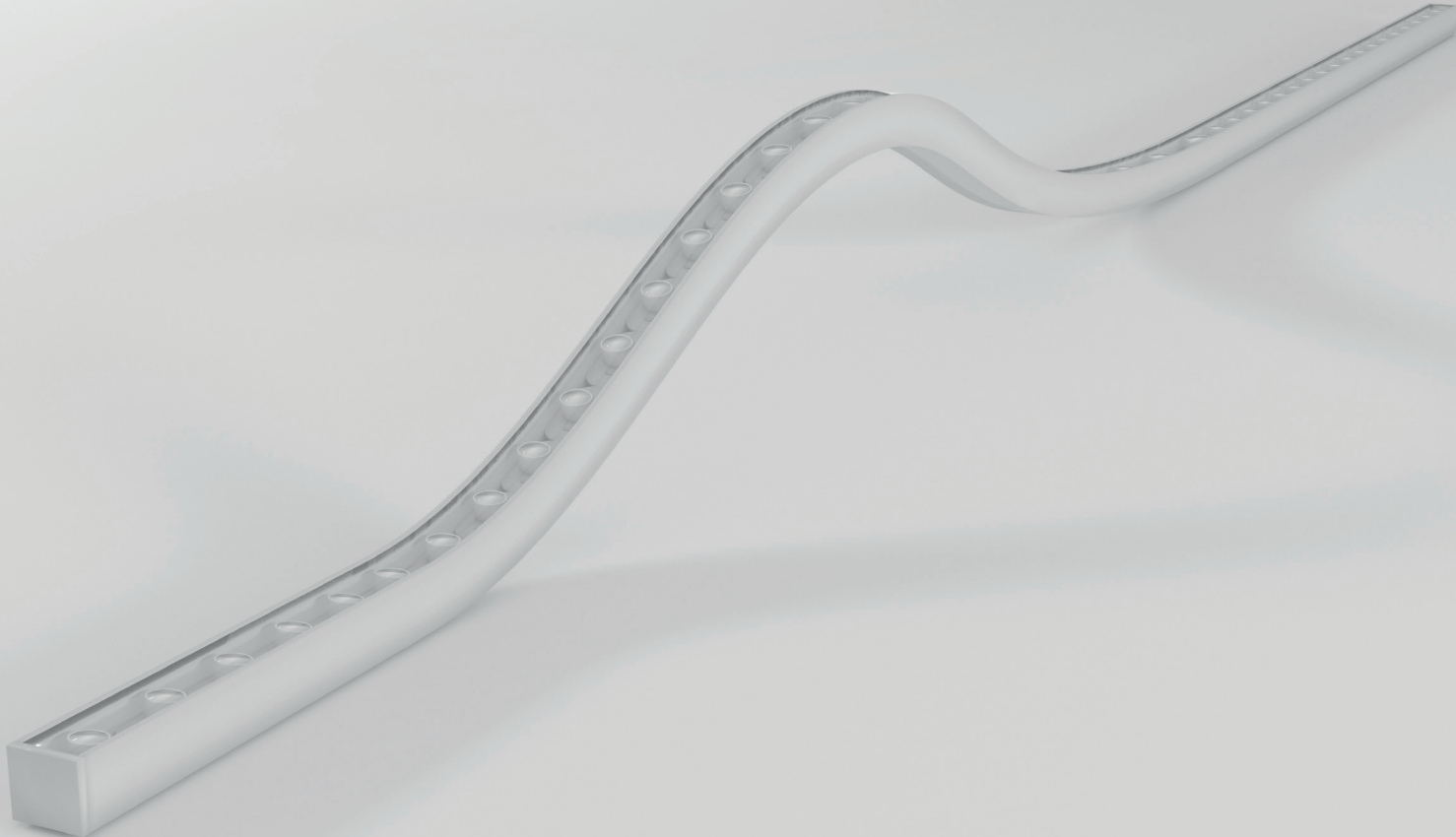
BEAM ANGLE

30° / 45° / 60°

IDEAL FOR ACHIEVING A FLAWLESS WALL WASHING EFFECT

Focused and directional, the Flexi Grazer is available in various single and dual beam angles suitable for different environments. While the lens implanted on the LED facilitates its directional feature, the

silicone encapsulation ensures durability, reliability and ease of installation. The luminaire is available in single colour temperature ranging from 2400K to 6000K, RGB, RGBW as well as Pixel.



ATEX CERTIFIED SOLUTIONS

LIGHTING OPTIONS

Single Colour 2200K-5700K
RGB
Pixel

FEATURES

UV Resistant
Flame Resistant
Saltwater Resistant
Solvent Resistant
UL Certified
IK08
IP68
Zone 2, Zone 22

ENHANCING ILLUMINATION WITHOUT COMPROMISING ON SAFETY

LEDflex now offers a range of linear lighting solutions that are ATEX compliant, making them an ideal solution for hazardous, explosive environments. With our new explosive proof lighting solutions, LEDflex is committed to assuring safety whilst offering a premium finish for any lighting design concept. Our flexible

linear lighting easily copes with a range of complex environments when combined with purpose-built accessories. The explosion proof luminaires distribute consistent and continuous light, ensuring safe and well-lit spaces built for indoor and outdoor hazardous environments across various industries.



EXPLORE OUR RANGE
WWW.LEDFLEXGROUP.COM